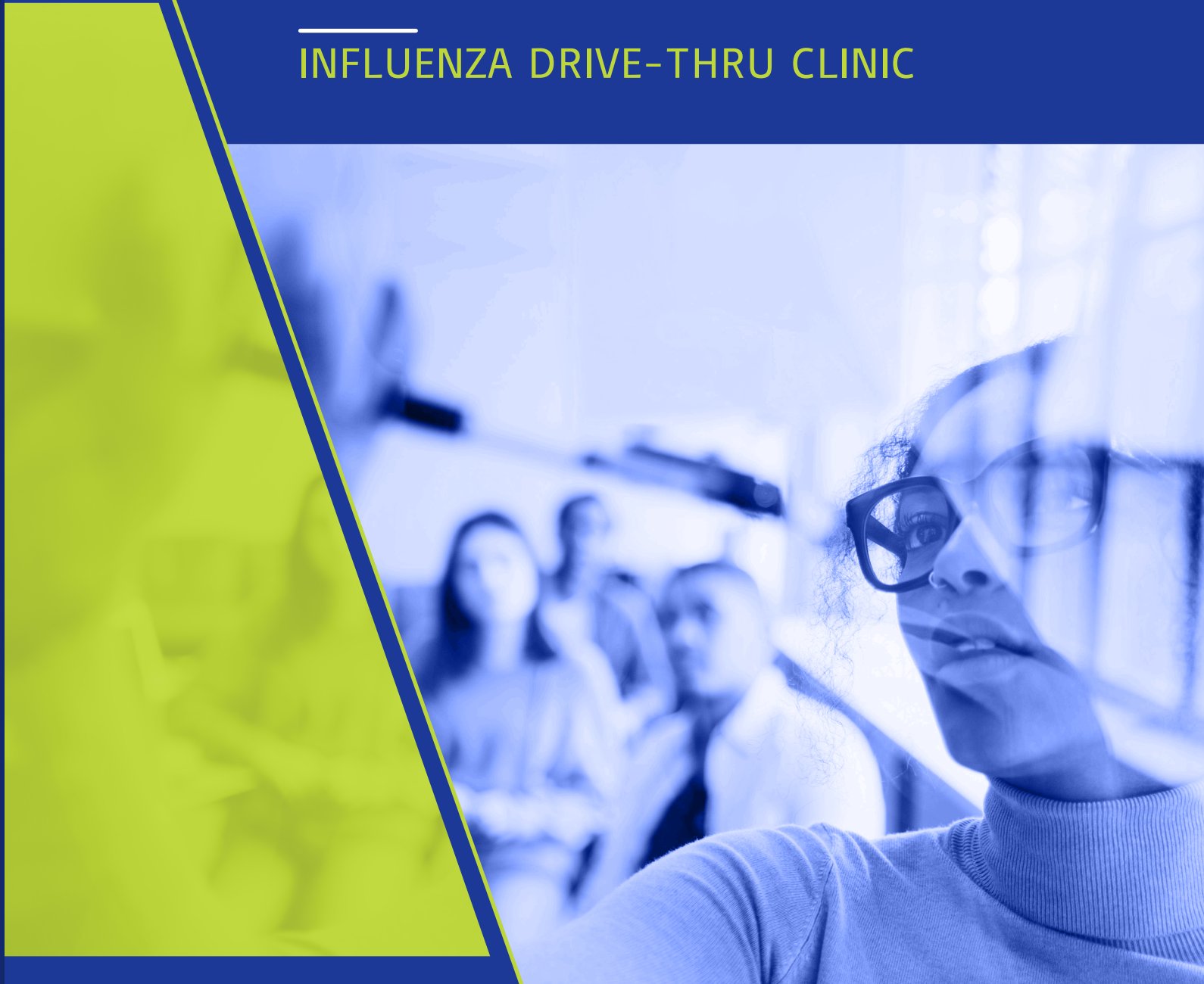


---

INFLUENZA DRIVE-THRU CLINIC



ADAPTIVE  
VACCINATION  
SOLUTIONS

# Clinic Considerations

**Here are some important considerations for choosing the appropriate alternative vaccination solution for you and your office:**

## ① Appointments vs Allowing Walk-Ins

- Appointments allow you to better control the patient flow, but may be different than what your patients are accustomed to, especially for an in-office walk-thru clinic
- If you are thinking about running a drive-thru clinic, consider separate lanes for those with appointments and those without if you decide to offer both options

## ② Inventory Management

- If you have multiple vaccines on hand for different patient types, ensure that inventory aligns with your appointment flow
- Work with your sales representatives to coordinate shipping and make sure you are receiving the appropriate quantity needed in a timely fashion

## ③ Staffing Needs

- Holding alternative immunization clinics may draw more patients than your practice is accustomed to seeing in a single day; ensure you not only have enough staff on hand, but that they are comfortable interfacing with a high volume of patients
- If holding several clinics on different days, either drive-thru or walk-thru, consider reducing the burden by alternating staff to give everyone a well-deserved rest

## ④ Drive-Thru Logistics

- If your office's parking lot is not large enough to hold a drive-thru clinic, consider partnerships with other offices or organizations (ie, sports teams with large stadiums)
- Check with your insurance company or payer to ensure the location you choose does not pose any problems with reimbursement

## ⑤ Billing and Reimbursement

- If you are considering running an alternative immunization clinic, it's important to make sure you have the right tools to process payment and handle billing, especially if doing a drive-thru clinic

# ONE-STOP SHOT DRIVE-THRU FLU CLINIC

In these uncertain times, patients may not be comfortable coming into the office, but immunization is paramount, and more important than ever. Putting on a drive-thru flu clinic can empower you to provide patients the opportunity get a flu vaccination without leaving the comfort and safety of their vehicle. This module is split into 3 key platforms: **PLAN**, **PREPARE**, and **PERFORM**. Each covers a different aspect of running a drive-thru flu clinic: clinic guidance and logistical flow, patient outreach, and clinic location preparation and signage. Together, they form a comprehensive plan that will enable you to run a successful clinic.



To print the entire One-Stop Shot Drive-Thru Flu Clinic section, **PRINT PAGES 4-10**, or either visit [VACCINESHOPPE.COM](https://vaccinestoppe.com)<sup>®</sup> or contact your Sanofi Pasteur Representative to request printed materials.

# ONE-STOP SHOT DRIVE-THRU FLU CLINIC PLAN

The first step is to prepare your office and staff for running the clinic, with logistical guidance and protocol training. The clinic guidance document provides step-by-step instructions for appointment setting dialogue, preparing materials for each drive-up immunization, and during/after immunization protocol. We've developed a logistical roadmap outlining how to set up each station and a proposed flow that vehicles should follow to ensure everyone knows their role, patients have minimal contact and spend the least amount of time waiting, and general smooth operation.

## 1 Clinic Guidance and Logistical Blueprint

### Examples



To print the Clinic Guidance and Logistical Blueprint, PRINT PAGES 5-7, or either visit [VACCINESHOPPE.COM](http://VACCINESHOPPE.COM)® or contact your Sanofi Pasteur Representative to request printed materials.

# One-Stop Shot Drive-Thru Flu Clinic

With flu season approaching and the possibility of a re-emergence of COVID-19 in the fall, it's more important than ever to ensure that patients are protected against influenza to avoid a misdiagnosis of COVID-19. In these uncertain times, patients may not be comfortable coming into the office, but immunization is paramount.

**SOLUTION:** Hold a drive-thru flu clinic so you can provide patients with the opportunity to get a flu vaccination without leaving the comfort and safety of their vehicle, ensuring separation between sick and healthy patients, and helping to limit traffic flow through your office.



Here you will find general planning tips, logistical considerations, and a clinic site blueprint and patient flow map.

We've broken it down into step-by-step instructions for 3 phases:

- 1 **PLAN**  
Making the Appointment
- 2 **PREPARE**  
Getting Ready for the Appointment
- 3 **PERFORM**  
During the Appointment

## Planning Tips

### Know the Flow

Have a plan in place to maintain traffic flow, from entrance to exit

### Have the Right Tools

Use the materials checklist provided as a starting point for ensuring you have all the items needed to run the clinic

### Patient Proof

Provide documentation of vaccine administration to all recipients at time of vaccination

### Have a Backup Plan

Ensure backup plans are in place in case of late arrivals or delays

See the materials checklist provided



# One-Stop Shot Drive-Thru Flu Clinic

## ① **PLAN:** Making the Appointment

### **Verify Insurance Status of Patient**

- Ask patient to email or fax a copy of their insurance card, if not on record previously

### **Review Patient Immunization Records**

- Discuss the risks and benefits and review contraindications with patient

### **If the Patient Getting Vaccinated Is Driving**

- Tell the patient they will be asked to wait 15 minutes before leaving the parking lot

### **Set Appointment Time and Provide Directions to the Clinic Site**

## ② **PREPARE:** Getting Ready for the Appointment

### **Before the Patient Pulls Up**

- Pull the influenza Vaccine Information Statement (VIS) sheet
- Prepare a tray with the appropriate vaccine and all needed immunization supplies:
  - *Bandages (spot or rectangular)*
  - *Sharps container*
  - *Alcohol wipes and sanitizing products*
  - *Paper towels*
  - *Cotton balls or sterile gauze pad*
  - *Thermometer*
- Create an encounter in your EHR or paper chart to document immunization
- Put on appropriate personal protective equipment

## ③ **PERFORM:** During the Appointment

### **Confirm Patient Information**

- Provide the VIS sheet and explain how patients should navigate the clinic

### **Administer the Vaccine**

### **If the Patient Is Driving**

- Ask them to remain in the parking lot for 15 minutes and recheck prior to discharge

### **Document Vaccinations According to Standard Procedures**



# One-Stop Shot Drive-Thru Flu Clinic Logistical Flow

This blueprint offers guidance on how to set up the clinic site, including station descriptions and the proposed patient flow.



# ONE-STOP SHOT DRIVE-THRU FLU CLINIC

## PREPARE

This platform serves to help you and your staff with patient outreach. Connecting with your patients is key in reinforcing trust and vaccine acceptance, ultimately setting your clinic up for success. We've provided you with messages to use in multiple channels, covering 4 key topics: a drive-thru clinic announcement, office preparation and adaptation protocol, reassurance of the importance of well and sick visits, and both pediatric and adult vaccination importance reminders.

- 1 Telephone Patient Outreach Communications
- 2 Email Patient Outreach Communications
- 3 EHR/Health Portal Patient Outreach Communications
- 4 Text/Social Media Patient Outreach Communications

### Examples



To print the Patient Outreach Communications, visit [VACCINESHOPPE.COM](https://VACCINESHOPPE.COM)® or contact your Sanofi Pasteur Representative to request printed materials.

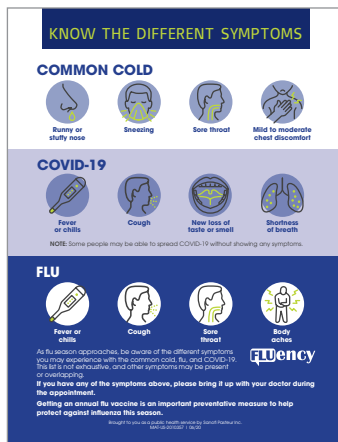


# ONE-STOP SHOT DRIVE-THRU FLU CLINIC

## PERFORM

The day of the clinic has arrived. The cars are starting to roll in. Time to shift immunization into gear. We've also included a collection of helpful signage to promote smooth operation, including a poster with information on symptoms, directional signs, and protocol instructions and reminders. Also included is a link to download an assortment of FLUency patient education materials highlighting statistics around influenza.

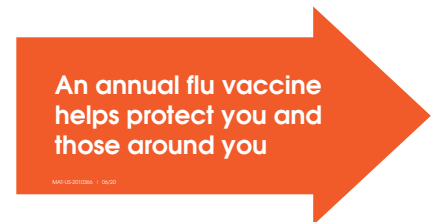
## Signage



COMMON COLD  
VS COVID-19 VS FLU  
FLASHCARD



STOP HERE SIGN



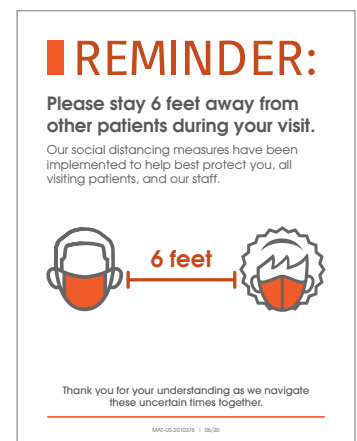
DIRECTIONAL ARROWS



CONTACTLESS  
CHECKOUT INFO



PERSONAL PROTECTIVE  
EQUIPMENT REMINDER

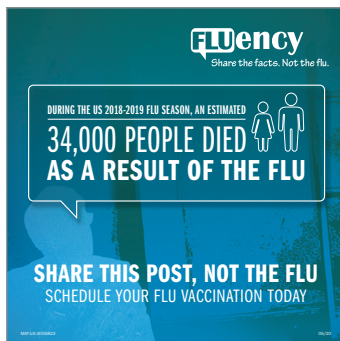


SOCIAL DISTANCING  
REMINDER

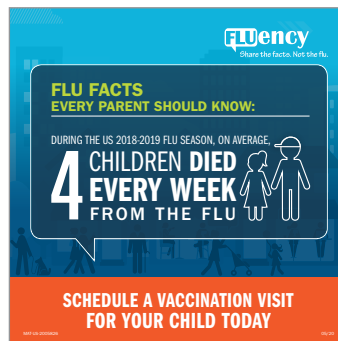
## ONE-STOP SHOT DRIVE-THRU FLU CLINIC

# PERFORM

## Patient Education Materials



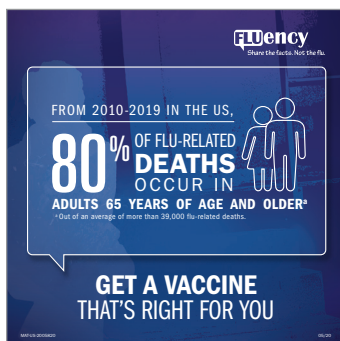
GENERAL AUDIENCE  
MEDIA POSTS



PEDIATRIC MEDIA POSTS



50+ ADULT AUDIENCE  
MEDIA POSTS



65+ ADULT AUDIENCE  
MEDIA POSTS



EMPLOYEE HEALTH  
MEDIA POSTS

Download the collection of [LOGISTICAL SIGNAGE](#) along with FLUency [PATIENT EDUCATION MATERIALS](#) or request printed materials by contacting your Sanofi Pasteur Representative or visit [VACCINESHOPPE.COM](http://VACCINESHOPPE.COM)®

## ADAPTIVE VACCINATION SOLUTIONS



VISIT [VACCINESHOPPE.COM](https://vaccineshoppe.com)® OR CONTACT  
YOUR SANOFI PASTEUR REPRESENTATIVE  
TO ORDER ADDITIONAL PATIENT EDUCATION  
MATERIALS FOR YOUR OFFICE